



Radiant Systems



A BREATH OF HOME

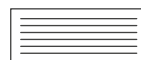
KFC-WD



KFC-WU



KFC-F



KFC-M



GIACOMINI
WATER E-MOTION

Ultimate comfort thanks to all-in-one system design

Radiant hot/cold integrated applications with dehumidification or "hybrid" solutions combining radiant underfloor heating and cooling with fan coils, year round and for extreme climate contexts.

Modern life is increasingly lived between closed walls, whether at home or at work.

The desire we all have today is that the environment where we live, work or rest should be as **comfortable** and **healthy** as possible, the **least wasteful** but at the same time highly adaptable.

The recent pandemic and the current geopolitical context, fundamentally focused on energy sources, have greatly accelerated the process of overhauling the existing and future housing stock.


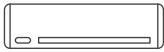


The *ultimate solution* cannot be left to the "do-it-yourself" approach, for several easily understandable reasons: complexity of the technological solutions available today; achievement of performance to which different devices, properly integrated in system logic, must compete; **control of costs**, both during installation but, above all, throughout the building life cycle; and guarantees for the end user.

Today residential stock needs to become increasingly efficient in order to achieve **climate neutrality** (EU 2050 Roadmap) through the electrification of the building sector: the use of **heat pump** technology will find wide diffusion, thanks to an unavoidable link with photovoltaics and storage.



For new all-electric systems, Giacomini's full range of fan coils is aimed at maximizing comfort in residential buildings in intense summer conditions.

- Sleek design, with **minimum footprint** and **maximum energy savings**
- **High quietness** thanks to fans with DC inverter technology
- Designed to be used either as the main terminal or, preferably, in **combination with radiant systems**
- Excellent **comfort quickly**: they "assist" radiant system increasing reaction speed to thermal comfort needs
- Advanced electronic controls for **home automation solutions** aiming at maximum comfort

	KFC-WD	KFC-WU	KFC-F	KFC-M
				
Noiseless	•	•	•	•
Adjustable air flow	•	•	•	•
Embedded DC Inverter	•	•	•	•
Multi-zone comfort control				•
Flush-mount installation			•	•
Touch controls	•	•		
Integrated home automation	•	•	•	•



KFC-WD



MAIN FEATURES



- 5 different outputs
- Compact dimensions and reduced installation space
- Extremely quiet
- DC inverter technology



Efficiency



Extra silent



Slim

KFC-WD is a high-efficiency fan coil unit with a **slim and compact** exposed cabinet designed for **low wall installation**. With a sleek and minimalistic design, KFC-WD is the highly silent solution that guarantees comfort at any time of the year. It is a **versatile and efficient system** that optimizes available space while aesthetically pleasing décor and increasing the efficiency of the application.

VERSION	m.u.	200	400	600	800	1000
COOLING PERFORMANCE (W 7/12 °C; A 27 °C)						
Cooling total output ⁽¹⁾	kW	0,91	2,12	2,81	3,30	3,71
Cooling sensible output ⁽¹⁾	kW	0,73	1,72	2,11	2,71	2,90
Water flow rate ⁽¹⁾	l/h	157	365	483	568	638
Losses of pressure ⁽¹⁾	kPa	12,1	8,2	17,1	18,0	21,2
HEATING PERFORMANCE (W 45/40 °C; A 20 °C)						
Heating output ⁽²⁾	kW	1,02	2,21	3,02	3,81	4,32
Water flow rate ⁽²⁾	l/h	175	380	519	655	743
Losses of pressure ⁽²⁾	kPa	9,1	9,2	19,1	21,2	23,3

(1) Coil delivery water temperature 7 °C, Coil return water temperature 12 °C, Air room temperature 27 °C d.b. and 19 °C h.b. (according to EN 1397)

(2) Coil delivery water temperature 45 °C, Coil return water temperature 40 °C, Air room temperature 20 °C d.b. and 15 °C h.b. (according to EN 1397)



KFC-WU



MAIN FEATURES



- 4 different outputs
- Reduced depth: only 128 mm (215 mm for XL)
- Extremely quiet
- DC inverter technology
- Electronic boards for remote control



Efficiency



Extra silent



Space-saving

KFC-WU is a fan coil unit with a slim and compact exposed element designed for **high wall installation**. KFC-WU is the ideal solution for superior thermal comfort all year round. Its extreme **quietness** is a major advantage that adds to its minimalist, streamlined design. In addition, the high-wall installation makes it possible to **optimize the use of space** while leaving freedom in the placement of furniture.

VERSION	m.u.	400	600	800	800 (XL)
COOLING PERFORMANCE (W 7/12 °C; A 27 °C)					
Cooling total output ⁽¹⁾	kW	1,24	1,61	1,94	3,12
Cooling sensible output ⁽¹⁾	kW	0,98	1,27	1,52	2,51
Water flow rate ⁽¹⁾	l/h	208	279	365	537
Losses of pressure ⁽¹⁾	kPa	11,7	5,1	5,3	11,5
HEATING PERFORMANCE (W 45/40 °C; A 20 °C)					
Heating output ⁽²⁾	kW	1,50	2,01	2,41	3,45
Water flow rate ⁽²⁾	l/h	260	349	451	593
Losses of pressure ⁽²⁾	kPa	16,3	7,2	8,1	12,5

(1) Coil delivery water temperature 7 °C, Coil return water temperature 12 °C, Air room temperature 27 °C d.b. and 19 °C h.b. (according to EN 1397)

(2) Coil delivery water temperature 45 °C, Coil return water temperature 40 °C, Air room temperature 20 °C d.b. and 15 °C h.b. (according to EN 1397)

KFC-F



MAIN FEATURES



- 3 different outputs
- Compact dimensions and reduced installation space
- Extremely quiet
- DC inverter technology
- "Open window" dry contact inlet



Efficiency



Extra silent



Limited footprint

KFC-F is a **built-in underfloor fan coil** unit ideal for very thermally exposed spaces. The solution is designed for very large architectural settings with high summer solar radiation and subject to winter cold drafts. With its **quiet power**, KFC-F neutralizes summer heat and winter cold through an air barrier. The greater compactness compared to solutions already on the market **decreases the installation footprint** guaranteeing the same **thermal output and comfort**.

VERSION	m.u.	400	600	800
COOLING PERFORMANCE (W 7/12 °C; A 27 °C)				
Cooling total output ⁽¹⁾	kW	1,21	1,62	2,12
Cooling sensible output ⁽¹⁾	kW	1,01	1,44	1,99
Water flow rate ⁽¹⁾	l/h	208	279	365
Losses of pressure ⁽¹⁾	kPa	11,2	5,1	5,3
HEATING PERFORMANCE (W 45/40 °C; A 20 °C)				
Heating output ⁽²⁾	kW	1,51	2,03	2,62
Water flow rate ⁽²⁾	l/h	260	349	451
Losses of pressure ⁽²⁾	kPa	16,1	7,3	8,1

(1) Coil delivery water temperature 7 °C, Coil return water temperature 12 °C, Air room temperature 27 °C d.b. and 19 °C h.b. (according to EN 1397)

(2) Coil delivery water temperature 45 °C, Coil return water temperature 40 °C, Air room temperature 20 °C d.b. and 15 °C h.b. (according to EN 1397)

KFC-M



MAIN FEATURES



- 4 models with 2-5 outlets
- Reduced depth: only 240 mm
- Extremely quiet
- DC inverter technology
- Wide range of control options



Extra silent



Compact size



One unit manages different zones

KFC-M is a ductable fan coil unit and multifan, which can be **installed in a suspended ceiling** and equipped with **integrated multi-zone control**. Thanks to its versatility, KFC-M is the ideal solution for a perfect climate in every season, a **compact and intelligent** system that optimizes thermal comfort and available space, integrating into the environment with a minimum impact on available space, guaranteeing **energy savings** throughout the year.

VERSION	m.u.	KFCMY206	KFCMY308	KFCMY410	KFCMY512
COOLING PERFORMANCE (W 7/12 °C; A 27 °C)					
Cooling total output ⁽¹⁾	kW	3,8	5,5	7,2	8,1
Cooling sensible output ⁽¹⁾	kW	2,7	3,9	5,1	6,1
Water flow rate ⁽¹⁾	l/h	600	950	1200	1400
Losses of pressure ⁽¹⁾	kPa	29	21	19	11
Max total output for single cooling zone ⁽¹⁾	kW			2,1	
Max sensible output for single cooling zone ⁽¹⁾	kW			1,5	
HEATING PERFORMANCE (W 45/40 °C; A 20 °C)					
Heating output ⁽²⁾	kW	3,9	5,7	7,4	9
Water flow rate ⁽²⁾	l/h	610	980	1300	1570
Losses of pressure ⁽²⁾	kPa	29	22	21	12
Max total output for single heating zone ⁽²⁾	kW			2,2	

(1) Coil delivery water temperature 7 °C, Coil return water temperature 12 °C, Air room temperature 27 °C d.b. and 19 °C h.b. (according to EN 1397)

(2) Coil delivery water temperature 45 °C, Coil return water temperature 40 °C, Air room temperature 20 °C d.b. and 15 °C h.b. (according to EN 1397)





GIACOMINI.COM



GIACOMINI S.P.A.

Via per Alzo, 39
28017 San Maurizio d'Opaglio
Novara Italy



ER0010  APR24
